

Smart Plus™

41
MULTIPLE
PANORAMIC
LAYERS



 **4-IN-1 DIGITAL** [PANO | CEPH | 3D CBCT | MODEL]

 **ONE SCAN, TWO IMAGES**  

 **ANATOMICAL FOV 12X9 FOR THE EXTENDED ARCH**

 **INNOVATIVE COMPRESSED SENSING TECHNOLOGY**

 **3D MODEL SCAN**

 **41 LAYERS PANORAMIC IMAGES: INSIGHT PAN**

 **RAPID CEPH 1.9 SEC**

SMART INNOVATION

ONE SCAN, TWO IMAGES

One scan with the Smart Plus generates not only a 3D CBCT image, but also a Panoramic 2D image. View both 3D CBCT and Auto Pano images in one viewer and avoid excess x-ray doses. One Scan, Two Images ideal for all patients needing multiple diagnoses.



* Insight panorama mode is separately provided.

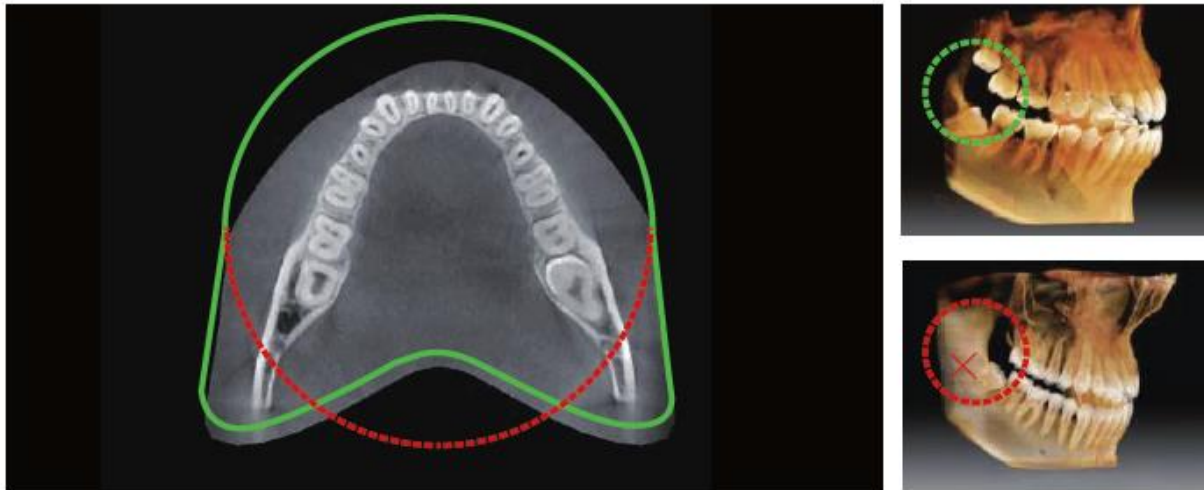


[2D AND 3D IN ONE VIEWER]

Help your patients understand their x-ray by presenting it all in one software viewer. Increase acceptance rates by avoiding the hassle of needing 2 viewers for 2 images.

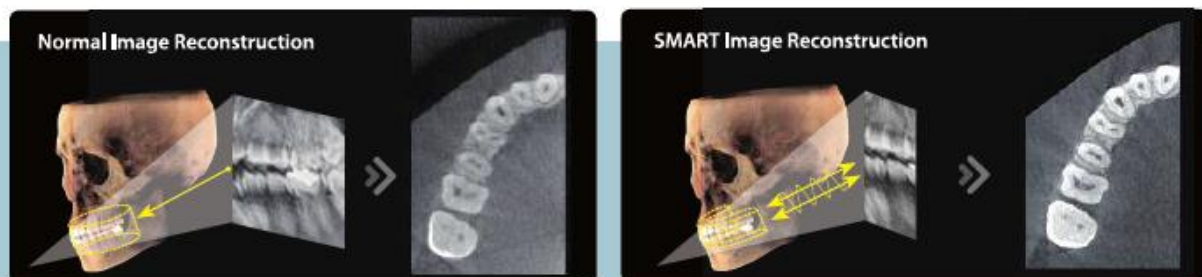
ANATOMICAL FOV 12X9 FOR THE EXTENDED ARCH

The full arch of patients can be fully viewed through the innovative FOV of Smart Plus. Unlike other devices with the same FOV, the Smart Plus follows an arch-shaped volume to show a wider view of the dentition. Traditionally with other devices, when a wisdom tooth is lying on its side, the tooth may be cut out of the image. The innovative “arch-shaped volume” eliminates the possibility of missing vital information and shows the hidden dentition area.



INNOVATIVE COMPRESSED SENSING TECHNOLOGY

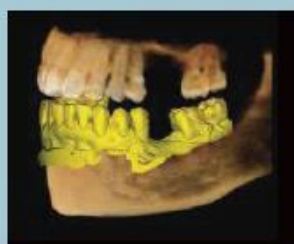
3D CBCT image quality has dramatically improved based on the innovative image reconstruction technology.



3D MODEL SCAN

3D model scanning enables dentists to store plasters as digital models.

DIGITISED ONE-STOP CLINIC



CAD/CAM integration
• Sufficient level of detail for surgical guide design



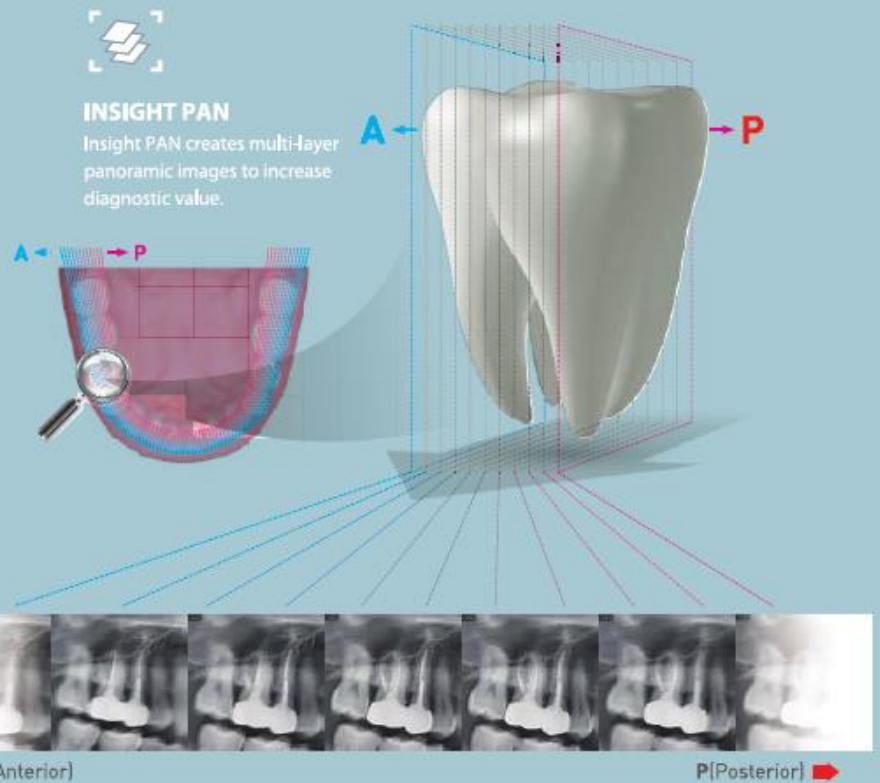
Specially designed Jig
• Stable platform from partial model to full model scanning

* 3D scanning for Plaster Cast with FOV 10x8.5 (cm)

SEE 41 LAYERS BEYOND CONVENTIONAL 2D WITH INSIGHT PAN

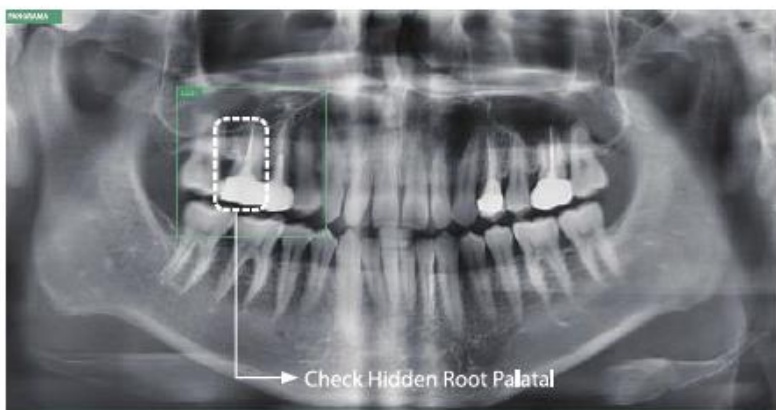
Since each patient has a slightly different arch, conventional panoramic images may occasionally miss important details which land outside of a single focal layer.

Insight PAN is capable of capturing 41-layered images, ensuring that all details are captured in a depth-added panoramic image.

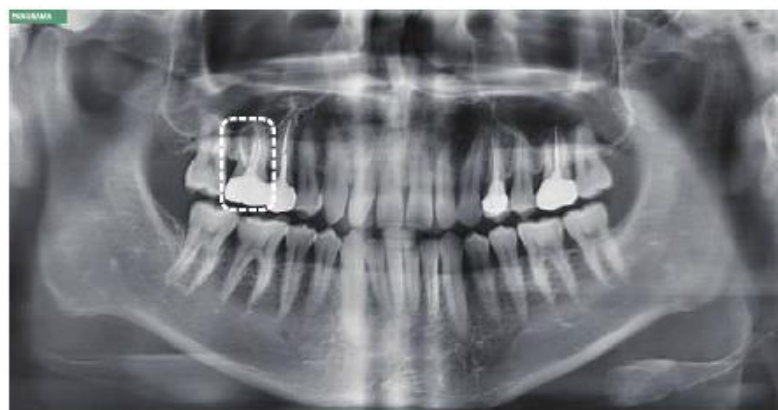


EXPERIENCE THE DIFFERENCES

The next-generation in panoramic technology, Insight PAN allows dentists to obtain never-before-seen in-depth diagnostic information from the anterior to posterior on a digital panoramic image. The Insight feature allows dentists to explore their region of interest, giving them the capability to find mesiobuccal, distobuccal, and even palatal root information.



INSIGHT FEATURE



Use the Insight to Discover:

- ✓ Hidden multi roots and canals
- ✓ Location of pulp and gutta-percha
- ✓ Broken files or root fractures

1.9 MINIMIZE MOTION ARTEFACTS WITH RAPID CEPH TECHNOLOGY

The next step in cephalometric technology, Vatech's new Rapid Ceph minimizes motion artefacts and enables faster diagnostic workflow while providing the highest quality digital images.

GREAT CLINICAL CARE WITH RAPID CEPH TECHNOLOGY



LATERAL

Provides specialized high quality images to suit orthodontics and maxillofacial surgeries.



FULL LATERAL

Full lateral image size is 30% wider and shows the occipital area of the patient, which enables comprehensive diagnosis.

PA



Carpus



SMV(Submentovertex)



PRODUCT CONFIGURATION

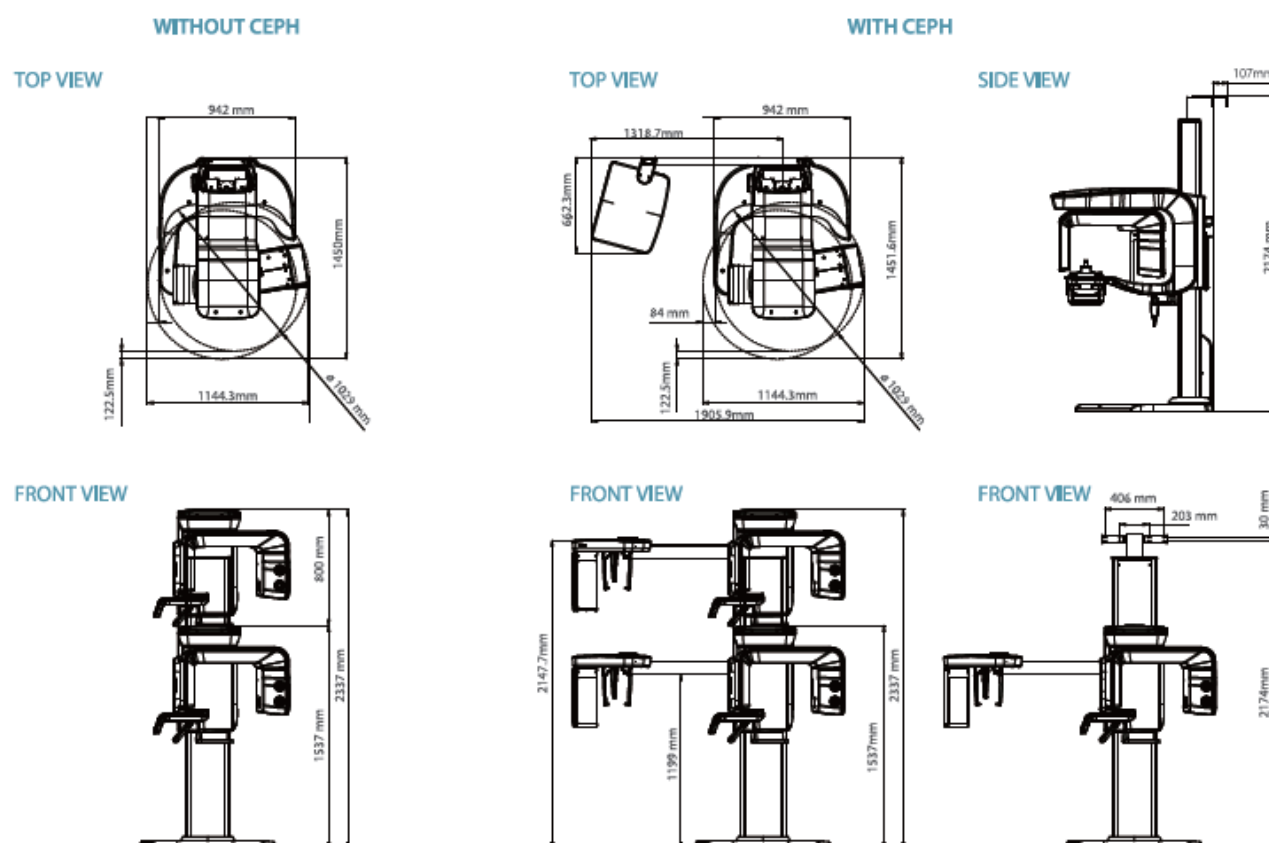
	CBCT	PANO	CEPH
Smart Plus	•	•	-
Smart Plus RC	•	•	•

SPECIFICATIONS (Smart Plus : PHT-35LHS)

Function	CBCT (with Auto PANO) + PANO + Model Scan + CEPH		
Focal Spot Size	0.5 mm (IEC 60336)		
3D CBCT FOV Size	5x5 / 10x7 / 10x8.5 cm (Anatomical 12x9 cm)		
Voxel Size	5x5	0.08 mm / 0.12 mm	
	10x7, 10x8.5	0.2 mm / 0.3 mm	
Scan Time	PANO	7.0 sec / 14.1 sec	
	CEPH	1.9 sec / 3.9 sec	
	CBCT	18.0 sec	
Gray Scale	14 bit		
Tube Voltage	60 - 99kVp		
Current	4 - 16mA		
Weight	Without CEPH unit	143 kg - without base	
		196 kg - with base	
	With CEPH unit	168 kg - without base	
		221 kg - with base	
Dimensions	Without CEPH unit	2,500 mm (L) x 1,700 mm (W) x 2,700 mm (H)	
	With CEPH unit	2,500 mm (L) x 2,500 mm (W) x 2,700 mm (H)	

*The specifications are subject to change without prior notice.

DIMENSIONS [Unit: mm]



***An additional 107mm of space is required behind the unit for wall mount bracket installation (mandatory).**